

SMRCA Roving Roofer

June/July/August 2016

Volume 28

Issue 2

Final Rule Issued to Improve Tracking of Workplace Injuries and Illnesses—Effective August 10, 2016

Why is OSHA issuing this rule?

This simple change in OSHA's rulemaking requirements will improve safety for workers across the country. One important reason stems from our understanding of human behavior and motivation. Behavioral economics tells us that making injury information publicly available will "nudge" employers to focus on safety. And, as we have seen in many examples, more attention to safety will save the lives and limbs of many workers, and will ultimately help the employer's bottom line as well. Finally, this regulation will improve the accuracy of this data by ensuring that workers will not fear retaliation for reporting injuries or illnesses.

What does the rule require?

The new rule, which takes effect Jan. 1, 2017, requires certain employers to electronically submit injury and illness data that they are already required to record on their onsite OSHA Injury and Illness forms. Analysis of this data will enable OSHA to use its enforcement and compliance assistance resources more efficiently. Some of the data will also be posted to the OSHA website. OSHA believes that public disclosure will encourage employers to improve workplace safety and provide valuable information to workers, job seekers, customers, researchers and the general public. The amount of data submitted will vary depending on the size of company and type of industry.

Anti-retaliation protections

The rule also prohibits employers from discouraging workers from reporting an injury or illness. The final rule requires employers to inform employees of their right to report work-related injuries and illnesses free from retaliation; clarifies the existing implicit requirement that an employer's procedure for reporting work-related injuries and illnesses must be reasonable and not deter or discourage employees from reporting; and incorporates the existing statutory prohibition on retaliating against employees for reporting work-related injuries or illnesses. These provisions become effective August 10, 2016, but OSHA has delayed their enforcement until Nov. 1, 2016 in order to provide outreach to the regulated community.

Compliance schedule

The new reporting requirements will be phased in over two years:

- Establishments with 250 or more employees in industries covered by the recordkeeping regulation must submit information from their 2016 Form 300A by July 1, 2017. These same employers will be required to submit information from all 2017 forms (300A, 300, and 301) by July 1, 2018. Beginning in 2019 and every year thereafter, the information must be submitted by March 2.
- Establishments with 20-249 employees in certain high-risk industries must submit information from their 2016 Form 300A by July 1, 2017, and their 2017 Form 300A by July 1, 2018. Beginning in 2019 and every year thereafter, the information must be submitted by March 2.

OSHA State Plan states must adopt requirements that are substantially identical to the requirements in this final rule within 6 months after publication of this final rule.

For OSHA Forms and information on recording Work-Related Injuries and Illnesses—[file:///C:/Users/RIPF/Downloads/-recordkeeping-new-osh300form1-1-04%20\(2\).pdf](file:///C:/Users/RIPF/Downloads/-recordkeeping-new-osh300form1-1-04%20(2).pdf)

Which work-related injuries and illnesses should you record?

Record those work-related injuries and illnesses that result in:

- Death,
- Loss of consciousness,
- Days away from work,
- Restricted work activity or job transfer, or
- Medical treatment beyond first aid.

You must also record work-related injuries and illnesses that are significant (as defined below) or meet any of the additional criteria listed below.

You must record any significant work-related injury or illness that is diagnosed by a physician or other licensed health care professional. You must record any work-related case involving cancer, chronic irreversible disease, a fractured or cracked bone, or a punctured eardrum. See 29 CFR 1904.7.



SOUTHEASTERN MICHIGAN ROOFING CONTRACTORS ASSOCIATION

3560 E. Nine Mile Road, Warren, MI 48091 (586) 759-2140 Fax (586) 759-0528 www.smrca.org

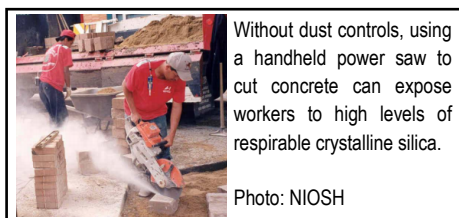
OSHA's Crystalline Silica Rule: Construction—Takes effect June 23, 2016

OSHA is issuing two standards to protect workers from exposure to respirable crystalline silica—one for construction, and the other for general industry and maritime—in order to allow employers to tailor solutions to the specific conditions in their workplaces.

Who is affected by the construction standard?

About two million construction workers are exposed to respirable crystalline silica in over 600,000 workplaces. OSHA estimates that more than 840,000 of these workers are exposed to silica levels that exceed the new permissible exposure limit (PEL).

Exposure to respirable crystalline silica can cause silicosis, lung cancer, other respiratory diseases, and kidney disease. Exposure can occur during common construction tasks such as using masonry saws, grinders, drills, jackhammers and handheld powered chipping tools; operating vehicle-mounted drilling rigs; milling; operating crushing machines; and using heavy equipment for demolition or certain other tasks.



Without dust controls, using a handheld power saw to cut concrete can expose workers to high levels of respirable crystalline silica.

Photo: NIOSH

The construction standard does not apply where exposures will remain low under any foreseeable conditions; for example, when only performing tasks such as mixing mortar; pouring concrete footers, slab foundation and foundation walls; and removing concrete formwork.

What does the standard require?

The standard requires employers to limit worker exposures to respirable crystalline silica and to take other steps to protect workers.

The standard provides flexible alternatives, especially useful for small employers. Employers can either use a control method laid out in Table 1* of the construction standard, or they can measure workers' exposure to silica and independently decide which dust controls work best to limit exposures to the PEL in their workplaces.

Regardless of which exposure control method is used, all construction employers covered by the standard are required to:

- Establish and implement a **written exposure control plan** that identifies tasks that involve exposure and methods used to protect workers, including procedures to restrict access to work areas where high exposures may occur.
- Designate a **competent person** to implement the written exposure control plan.
- Restrict **housekeeping** practices that expose workers to silica where feasible alternatives are available.
- Offer **medical exams**—including chest X-rays and lung function tests—every three years for workers who are required by the standard to wear a respirator for 30 or more days per year.
- **Train workers** on work operations that result in silica exposure and ways to limit exposure.
- **Keep records** of workers' silica exposure and medical exams.

What is Table 1?

Table 1 matches common construction tasks with dust control methods, so employers know exactly what they need to do to limit worker exposures to silica. The dust control measures listed in the table include methods known to be effective, like using water to keep dust from getting into the air or using

ventilation to capture dust. In some operations, respirators may also be needed.

Employers who follow Table 1 correctly are not required to measure workers' exposure to silica and are not subject to the PEL.

Table 1: Specified Exposure Control Methods When Working with Materials Containing Crystalline Silica

Equipment/ Task	Engineering and Work Practice Control Methods	Required Respiratory Protection and Minimum Assigned Protection Factor (APF)	
		≤ 4 hrs/ shift	> 4 hrs/ shift
(ii) Handheld power saws (any blade diameter)	Use saw equipped with integrated water delivery system that continuously feeds water to the blade. Operate and maintain tool in accordance with manufacturer's instructions to minimize dust emissions. • When used outdoors. • When used indoors or in an enclosed area.	None APF 10	APF 10

Excerpt from Table 1. *See regulatory text for construction standard, with complete Table 1 at www.osha.gov/silica/SilicaConstructionRegText.pdf.

Table 1 Example: Handheld Power Saws

If workers are sawing silica-containing materials, they can use a saw with a built-in system that applies water to the saw blade. The water limits the amount of respirable crystalline silica that gets into the air.

In this example, if a worker uses the saw outdoors for four hours or less per day, no respirator would be needed. If a worker uses the saw for more than four hours per day or any time indoors, he or she would need to use a respirator with an assigned protection factor (APF) of at least 10. In this case, a NIOSH-certified filtering face piece respirator that covers the nose and mouth (sometimes referred to as a dust mask) could be used. If a worker needs to use a respirator on 30 or more days a year, he or she would need to be offered a medical exam.

OSHA's Crystalline Silica Rule—Continued

Alternative exposure control methods

Employers who do not use control methods in Table 1 must:

- Measure the amount of silica that workers are exposed to if it may be at or above an **action level of 25 µg/m³** (micrograms of silica per cubic meter of air), averaged over an eight hour day.
- Protect workers from respirable crystalline silica exposures above the **permissible exposure limit of 50 µg/m³**, averaged over an eight-hour day.
- Use **dust controls** to protect workers from silica exposures above the PEL.
- Provide **respirators** to workers when dust controls cannot limit exposures to the PEL.

When are employers required to comply with the standard?

Construction employers must comply with all requirements of the standard by June 23, 2017, except requirements for laboratory evaluation of exposure samples, which begins on June 23, 2018.

Additional information

Additional information on OSHA's silica rule can be found at www.osha.gov/silica. OSHA can provide extensive help through a variety of programs, including technical assistance about effective safety and health programs, workplace consultations, and training and education.

OSHA's On-site Consultation Program offers free and confidential occupational safety and health services to small and medium-sized businesses in all states and several territories across the country, with priority given to high-hazard worksites. On-site consultation services are separate from enforcement and do not result in penalties or citations. Consultants from state agencies or universities work with employers to identify workplace hazards, provide advice on compliance with OSHA standards, and assist in establishing and improving safety and health management systems. To locate the OSHA On-site Consultation Program nearest you, call 1-800-321-OSHA (6742) or visit www.osha.gov/dcsp/smallbusiness.

For more information on this and other health related issues impacting workers, to report an emergency, fatality, inpatient hospitalization, or to file a confidential complaint, contact your nearest OSHA office, visit www.osha.gov, or call OSHA 1-800-321-OSHA (6742), TTY 1-877-889-5627.

2016 Roofers Union Local #149/RIPF Scholarship Winners

In an effort to promote excellence in the roofing industry, Roofers Union Local #149 and the Roofing Industry Promotion Fund are working together to offer scholarship grants to worthy individuals.

This year the program offered four scholarship grants in the amount of \$1,000.00 each, to those eligible individuals who are attending or planning to enroll at an accepted college or university.

Scholarship Grants are possible through contributions by Roofers Union Local #149, the Roofing Industry Promotion Fund and the participating roofing contractor employer of the recipient's parent or guardian.

The 31st Annual Scholarship Grant Program winners are:

Ashley Arnold, Sterling Heights	Major: Management
Ryan Cronk, Macomb	Major: Nursing
Ashlie Hawe, Shelby Twp.	Major: Biomolecular Science
Elise Tomaszewski, St. Clair Shores	Major: Horticulture/Plant Genetics

CONGRATULATIONS!!



2016 Roofers Union Local #149/Roofing Industry Promotion Fund Scholarship Grant Winners pictured from left to right: Mark Peterson (Governor) Elise Tomaszewski, Ryan Cronk, and Ashlie Hawe. Not pictured: Ashley Arnold



What's new in Todd Sova's office!





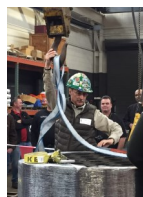
4th Annual Safety Day

SAFETY MATTERS AND SO DO YOU!!

The SMRCA, Roofers Union Local #149 and the JATC Apprenticeship Training Center Safety Committee will be hosted its 4th Annual Safety Day on Friday, February 26, 2016 at the JATC Training Center in Oak Park.

American Safety Products, Inc. was on hand to demonstrate fire safety and the safety committee presented basic signaling and rigging.

WORKING TOGETHER TO KEEP YOU SAFE AND INFORMED!



RIPF/SMRCA Annual Meeting

The 2016 RIPF/SMRCA Annual Meeting and Reception was held on April 14th at Amnesia—Greek Town Casino Hotel. Great venue, great food and great company. Thank you to all who participated and sponsored this event, we appreciate your support. Contractors and Associate members gathered for dinner, followed by the RIPF/SMRCA Annual Meeting. The new RIPF Trustees and SMRCA Board of Directors were elected at the meeting.

Congratulations and thank you for volunteering your time to help administer the Associations!

Newly Elected RIPF Trustees May 1, 2016-April 30, 2017

The election results are as follows:

RIPF Trustees

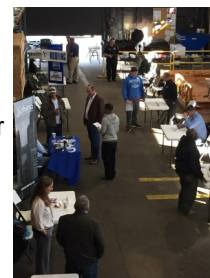
President	Brian Moore Schreiber Corporation
Vice-President	Dan Casey T.F. Beck Company
Treasurer	Roger LaDuke LaDuke Roofing & Sheet Metal
Secretary	Brian Sylvain North Roofing Company

Roofers Job Fair

The SMRCA and Roofers Union Local #149 Working Together Program hosted a Job Fair on Saturday, March 12, 2016 and Saturday, June 9, 2016 at the JATC Apprenticeship Training Center in Oak Park.

Attendees had the opportunity to meet union roofing companies in the Detroit area, hear what the union contractors have to offer and the benefits of becoming a union worker in a relaxed environment, with no pressure.

If you know anyone interested in a roofing career, contact Roofers Union Local #149—313-961-6093.



Southeastern Michigan Roofing Contractors Association

Michigan Roofing Contractors Association

Detroit Roofers JATC Local 149

Roofers Local #149



Newly Elected SMRCA Board of Directors May 1, 2016-April 30, 2017

The election results are as follows:

SMRCA Board of Directors

President	Anthony Schena Schena Roofing & Sheet Metal Co., Inc.
Vice-President	Roger LaDuke LaDuke Roofing & Sheet Metal
Treasurer	Dan Casey T.F. Beck Company
Secretary	Brian Sylvain North Roofing Company
Director	Brian Moore Schreiber Corporation
Director	Paul Schick Newton Crane Roofing, Inc.

Working Together Labor Management Team Update through June 2016

We are please to report the following activities and results from this year so far.

- Secured a bid opportunity worth about \$700,000 for union contractors who were later awarded the projects
- Secured a commitment from a large regional medical center that future roofing work would only be awarded to local union contractors
- Distribution of over 500 union recruitment fliers
- Labor Management has sponsored 2 job fairs, attended various job fairs sponsored by others and presented "Contracting as a Career Choice" to multiple trade oriented recruitment and training organizations
- We've attended pre-bid and bid-openings representing 55 public projects and have noticed 1/3 of projects traced this year are sinking fund, a substantial increase over prior years

Upcoming Plans:

- Continue outreach efforts to promote union contracting with local recruiters, non-union contractors, major purchasers and construction managers
- Slate Coasters, handcrafted by the Labor Management Committee, will be given as gifts to school officials during our annual follow-up to determine available work and complete a satisfaction survey.

Please keep in mind, we need to be kept informed of upcoming public bids. Many public bids are only advertised by invite or local papers.

Contact the SMRCA Office 586-759-2140 or Roofers Union Local #149 313-961-6093.



Slate Project 2016

Birthday Wishes

Mark Stasa

Kerr, Russell & Weber PLC

May 7

Jodi Smith

Allied Building Products

May 15

Judd Crane

Crane Roofing, Inc.

June 20

Lisa Yontz

ABC Supply

July 13

Mike Mass

Roofing Products of Michigan, Inc.

July 23

Marie Schena

Schena Roofing & Sheet Metal Co., Inc.

July 23

Ed Karpinski

Retired Member

August 8

Jason Emery

Schreiber Corporation

September 4

Heather Hadley

SMRCA

September 21

Anthony Schena

Schena Roofing & Sheet Metal Co., Inc.

October 7

Pat Fritsch

Roofing Products of Michigan, Inc.

October 16

Stacy Foley

Crane Roofing, Inc.

October 20

Education Resources



CAM Online

www.cam-online.com



NRCA

www.nrca.net



MIOSHA

www.michigan.gov/miosha



Anniversary Wishes

Pat & Jenny Casey

T.F. Beck Company

May 21

Todd & Amanda Sova

National Roofing & Sheet Metal Co., Inc.

June 6

Heather & Chris Hadley

SMRCA

June 29

Mary Jo & Ken Dietrich

T.F. Beck Company

September 26

Anthony & Kristy Schena

Schena Roofing and Sheet Metal Co., Inc.

October 12

Chuck & Dee Rosa

Retired Member

October 16

Steve & Lisa Yontz

ABC Supply

October 17

Deepest Sympathy

Our deepest sympathy's are extended to family and friends of:

Philip LaDuke Sr.

(Father of Roger LaDuke,
LaDuke Roofing & Sheet Metal)



OSHA Violation Increase

OSHA has announced maximum penalties for OSHA violations set to increase for the first time since 1990. The new penalty levels take effect after Aug. 1, 2016 when the maximum penalty for serious violations will rise from \$7,000 to \$12,471. The maximum penalty for willful or repeated violations will increase from \$70,000 to \$124,709. Any citations issued by OSHA after Aug. 1, 2016 will be subject to the new penalties if the related violations occurred after Nov. 2, 2015.

If you (or someone you know) would like to be part of the Michigan Roofing Contractors Association (MiRCA), contact the Association Office at 586-759-2140 or email heather.hadley@smrca.org for information and an application.

2016 SMRCA Golf Outing

The 2016 SMRCA Annual Golf Outing was held at Links of Novi on Monday, May 23, 2016. Great day! Great fun! Great event!

Thank you to all of the prize contributors, sponsors and attendees that made the SMRCA Golf Outing a HUGE success! Special thanks are extended to RCI-Great Lakes Chapter for sponsoring the Putting Competition; Colin Vaughan, Georgia-Pacific and Bill Mulford, MEP Insulation Recycling for taking photos; Stacy Foley and Shelley Crane, Crane Roofing, Inc. for registration and ticket sales; and the SMRCA Golf Outing Committee— Roger LaDuke, LaDuke Roofing & Sheet Metal; Dan Casey, T.F. Beck Company; Doug Stiff, Royal Roofing Company and Pat Frisch, Roofing Products of Michigan, Inc.

2016 Golf Sponsors

ABC Supply
 Advanced Architectural Sheet Metal & Supply, Inc.
 ALCO Products, LLC
 Allied Building Products
 ATLAS EPS
 BeneSys, Inc.
 Benson Building Supply
 Division 7 Roofing Solutions, Inc.
 Edw. C. Levy Company
 Environmental Industrial Services, Inc.
 Firestone Building Products
 GAF Materials Corporation
 Garwood, Buda, Knight & Associates, Inc.
 Georgia-Pacific Densdeck
 Hunter Panels
 Johns Manville
 JR Enterprises
 Kerr, Russell and Weber, PLC
 Lutz Roofing Company, Inc.
 MEP Insulation Recycling
 MWA, Inc.
 M.W. Morss Roofing, Inc.
 National Ladder & Scaffold Company
 North Roofing Company
 North Coast Roofing Systems, Inc.
 NTH Consultants, LTD.
 Oakland Metal Sales, Inc.
 L.T. Ollesheimer & Son, Inc.
 RCI
 R.K. Hydro-Vac, Inc.
 Roofers Union Local #149
 Roofing Industry Promotion Fund
 Roofing Products of Michigan, Inc.
 Royal Roofing Company
 Schreiber Corporation
 Sika Sarnafil
 Siplast Roofing & Waterproofing Systems
 SMRCA
 Sullivan, Ward, Asher & Patton, P.C.
 T.F. Beck Company
 Trufast
 United Asphalt Company Inc.
 USG Securock
 VTC Insurance Group
 Wimsatt Building Materials, Inc.

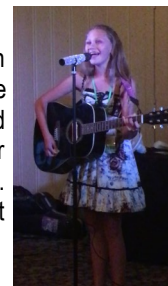


2016 MiRCA Annual Convention

The 2016 MiRCA Annual Convention was held at Mission Point, Mackinac Island on July 21-24, 2016.

The convention kicked off with everyone gathering to see new and old friends and family and networking with business associates at the Welcome Reception on Thursday. Garwood, Buda, Knight and Associates, Inc. hosted the hospitality suite on Thursday evening—thank you to Marc Garwood and Kayo Clifford!

Friday's educational session "Technology Solutions" was presented by Kathy Mazur, MTC. She delivered a great presentation familiarizing contractors with their options and technology choices. Attendees also gathered for a euchre tournament, everyone had a blast even those who came to watch and socialize. Saturday Evening's Reception was fantastic, but mother nature wanted to make sure we were warm enough with the sweltering heat and no air conditioning. The Royce and Jenn band put on another spectacular performance and even though the room was sweltering our group packed the dance floor and enjoyed the evening. We even had an unexpected performance from Alexa Kenny (daughter of Mike and Christina Kenny, National Roofing & Sheet Metal Co, Inc.) singing an original piece she wrote "Talk To You"...AMAZING!! Way to go Alexa!



Alexa Kenny

The MiRCA kids had fun in the kid's program—making and flying kites on the front lawn was one of the highlights.

Thank you to all of the attendees and sponsors that help make this event a success year after year. We appreciate your support!

If you haven't attended a convention or it has been awhile, come join us next year at Shanty Creek Resort, July 20-23, 2017.



2016 MiRCA Convention Sponsors

A & Z Commercial and Residential Roofing
 ABC Supply
 Accident Fund Insurance Company
 Allied Building Products
 Benson's Building Supply
 Bornor Restoration, Inc.
 Environmental Industrial Services, Inc.
 GAF Materials Corporation
 Garwood, Buda, Knight & Associates, Inc.
 Hoekstra Roofing Company
 Johns Manville
 JR Enterprises
 L.T. Ollesheimer & Son, Inc.
 Metal Design & Manufacturing
 Metal-Era
 Michigan Roofing Contractors Association
 Mid Michigan Roofing
 MTC
 MWA Commercial Roofing Solutions
 National Ladder & Scaffold Company
 National Roofing & Sheet Metal Co., Inc.
 North Roofing Company
 North Coast Roofing Systems, Inc.
 Oakland Metal Sales, Inc.
 PRO Chapter – Flint
 Roofing Industry Promotion Fund
 Schreiber Corporation
 Specialized Roofing Sales, Inc.
 T. F. Beck Company
 Thomas Brown & Son Roofing Company
 TK Roofing Products and Marketing
 Valenti Trobec Chandler, Inc.

The MiRCA Board of Directors gathered for a meeting to elect the new officers for the 2016-2017 term.

2016-2017 MiRCA Board of Directors

Brian Sylvain	President
Roger LaDuke	Vice President
George Schena	Treasurer

Contractor Representatives:

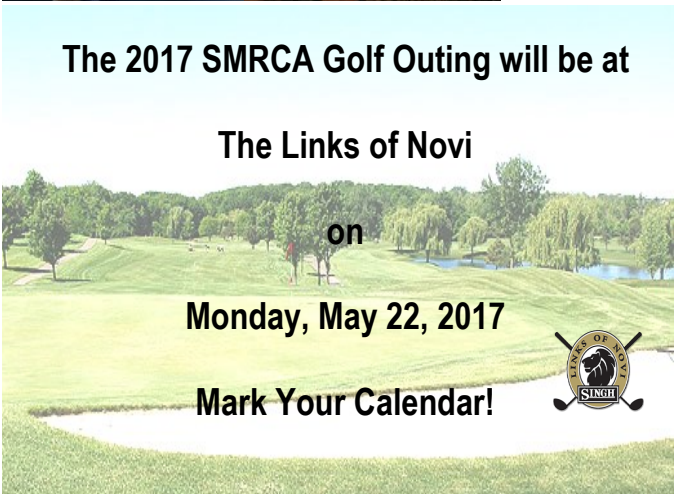
Robert Boom
 Bill Bornor
 Daniel Casey
 Pat Casey
 James Coppens
 Steven Hoekstra
 Anthony Schena
 Gary Sova
 Todd Sova

Associate Representatives:

C. Kim Emery
 Marc Garwood
 Jim Markiewicz



2016 MiRCA Convention Photos



The 2017 SMRCA Golf Outing will be at

The Links of Novi

on

Monday, May 22, 2017

Mark Your Calendar!



on


Monday, May 22, 2017

Mark Your Calendar!

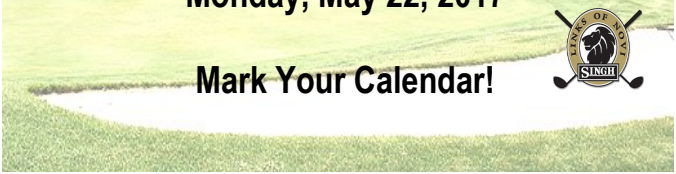


Monday, May 22, 2017

Mark Your Calendar!



Mark Your Calendar!



The 2017 MiRCA 52nd Annual Convention

July 20-23, 2017

Shanty Creek Resort—Summit Village

Reservations can be made online now at:

<http://reserve.shantycreek.com/?g=294366>

The logo for Shanty Creek Resorts features a stylized mountain range with evergreen trees in the foreground. Below the graphic, the text "SHANTY CREEK RESORTS" is written in a blue, sans-serif font. The entire logo is contained within a white rectangular box.

Shanty Creek Resort—Summit Village

Reservations can be made online now at:

<http://reserve.shantycreek.com/?g=294366>

The logo for Shanty Creek Resorts features a stylized mountain range with evergreen trees in the foreground, all in shades of teal and blue. Below the graphic, the text "SHANTY CREEK RESORTS" is written in a teal, sans-serif font, with a thin teal line underneath.

Reservations can be made online now at:
<http://reserve.shantycreek.com/?g=294366>

The logo for Shanty Creek Resorts features a stylized mountain range with evergreen trees in the foreground, set against a light blue background. Below the graphic, the text "SHANTY CREEK RESORTS" is written in a bold, sans-serif font.

<http://reserve.shantycreek.com/?g=294366>

The logo for Shanty Creek Resorts features a stylized mountain range with evergreen trees in the foreground. Below the graphic, the text "SHANTY CREEK RESORTS" is written in a bold, sans-serif font. The entire logo is set against a white rectangular background.

SHANTY CREEK RESORTS



SMRCA

- S**AFETY A safe jobsite is assured because SMRCA crews complete the M.U.S.T. Safety Training and Drug Testing.
- M**ULTIPLE SERVICES A SMRCA Roofing Contractor has the ability to provide the roof you need because of our expertise in a variety of roofing applications and techniques.
- R**ELIABLE SMRCA Contractors are Union trained professionals bringing an Industry leading standard of service, quality and knowledge to every project.
- C**ONFIDENCE Projects completed by SMRCA Contractors provide a Michigan roofing contractor 2 year standard workmanship warranty.
- A**CCOUNTABILITY SMRCA Contractors are established companies with years of experience in providing responsive service, superior workmanship and exceptional value.

Call us today at 586-759-2140 to receive our free "Roofing Facts" brochure or contact one of the SMRCA Contractors below for a no-cost estimate on your next roofing project.

Southeastern Michigan Roofing Contractors Association Members

T. F. BECK COMPANY

Rochester Hills, MI
(248) 852-9255
www.tfbeck.com

LUTZ ROOFING COMPANY, INC.

Shelby Twp., MI
(586) 739-1148
www.lutzroofing.com

ROYAL ROOFING COMPANY

Orion, MI
(248) 276-ROOF (7663)
www.royal-roofing.com

J. D. CANDLER ROOFING CO., INC.

Livonia, MI
(734) 762-0100
www.jdcandler.com

M.W. MORSS ROOFING, INC.

Romulus, MI
(734) 942-0840
www.morssroofing.com

SCHEMA ROOFING & SHEET METAL CO., INC.

Chesterfield, MI
(586) 949-4777
www.schenarroofing.com

CHRISTEN/DETROIT

Detroit, MI
(313) 837-1420
www.cdetroit.com

NEWTON CRANE ROOFING, INC.

Pontiac, MI
(248) 332-3021
www.newtoncraneroofing.com

SCHREIBER CORPORATION

Wixom, MI
(248) 926-1500
www.schreiberroofing.com

DETROIT CORNICE & SLATE COMPANY

Ferndale, MI
(248) 398-7690
www.detroitcorniceandslate.com

NORTH ROOFING COMPANY

Auburn Hills, MI
(248) 373-1500
www.northroofing.com

LADUKE ROOFING & SHEET METAL

Oak Park, MI
(248) 414-6600
www.ladukeroofing.com

DAVE POMAVILLE & SONS, INC.

Warren, MI
(586) 755-6030
www.PomavilleRoofing.com



www.smrca.org